



Country Clippings

Easton Garden Club Newsletter

February 2004

Editor: Robin Kallfelz

e-mail: robin@eastongardenclub.org

**M
E
E
T
I
N
G**

February 11 (Wednesday) 7:30pm Oakes Ames Memorial Hall

"Birds of Winter".....Phil Kyle

A charismatic "Birder" comes to entertain and educate.

Exhibits: *"Carnival!"*

An arrangement representing the
New Orleans Mardi Gras Celebration

Horticulture: *"Any Forced Flower or Branch"*

Topic: *"Gardening in Small Spaces"*

Refreshments: Pat Jacobsen, chairperson
Ann Rapp, Cathy Spadea, Lisa Kenny,
Dawn Szum, Ann Dreiker

Table Arrangement: Judy Tyler



EGC News

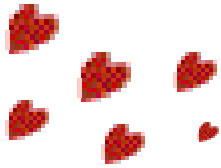
Board Meeting: The February board meeting will be held Wednesday, February 25th, 2004 at 7:00pm at the home of Nancy Ruggles.

Annual Meeting: The Annual South Shore District Meeting will be held on **Wednesday, March 31st** at the new Shaws Center in Brockton. Check in is at 9:00 am and the day includes continental breakfast, and luncheon. The speaker this year will be our South Shore District Director, Cheryl Collins. Anyone interested in attending and sitting together with other EGC members, please send Nancy Cohenno a check (or give it to her at the meeting) in the amount of \$25 by March 7th. Please write your preference of baked scrod or baked-stuffed chicken breast on the bottom of your check.

Recipe Book Reminder: If you haven't given your potluck supper recipe to Maureen Curtin, please try to get it to her by the end of this month. She will once again be putting together a little cookbook for us of all the delicious dishes that we shared in January. E-mail them to her at Maureen.curtin@comcast.net.

Christmas House Tour Photos: Digital photos of the EGC house tour, "Joyous Noel," are available for viewing on our website...thank you to Gloria Freitas, Judy Bruno, Nancy Cohenno, and our webmaster, Rory Kallfelz. Check them out at:

www.eastongardenclub.org



Events in Our Area

The Rhode Island Spring Flower and Garden Show

February 19-22, 2004

Thurs.-Sat. 10am-9pm & Sun. 10am-6pm

Highlights of the 2004 RI Spring Flower & Garden Show will include:

An expanded number of Gardens and Vignettes with more colorful flowers.

A special cooking demonstration with Chef La Moia of Providence's La Moia Restaurant!

Nationally acclaimed gardening broadcaster Paul Parent will be on hand to answer your questions! A new entrance design highlighting the theme of A Garden Retreat.

The RI Federation of Garden Clubs will present a Standard Flower Show.

Speakers include such internationally known horticulturists as Roger Swain, Julie Moir Messervy, Pat Lanza and David Schwartz. Our Educational Café sponsored by Borders Bookstore is located on the fifth level of the convention center.

Singer/songwriter, Lindsay Adler, performs her charming and entertaining children's music. Storyteller Cindy Killavey will entertain children of all ages with enchanting stories mid-mornings on Saturday and Sunday.

Tickets will be available through the online Flower Show Ticket Store until February 6 and at select AAA centers throughout NE starting December 1. Tickets will also be available at the door of the RI Convention Center on the day of the show. For further information on ticket availability, please contact our Ticketing Coordinator, Karen E. Brol at (401) 253-0246.

Advance Tickets \$12.00 Good Any Day; Adults \$14.00 - Weekdays; \$15.00 - Weekends
Children (ages 6-12) \$7.00; Children under 6 are free.

Seniors/Students \$13.00 - Weekdays; \$14.00 - Weekends

Evening Wine Samplings, Saturday, February 21, 2004, 6pm - 9pm, \$20.00 per person (Price does not include admission to the show.)

Industrial Strength Perennials

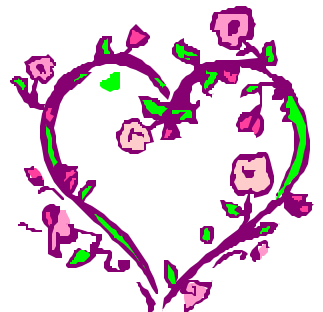
Thursday, February 26, 2004; 7:00-8:30 pm

Instead of growing perennials that require life-support systems, why not choose plants that will overcome all kinds of challenges? Horticulturist Stephanie Cohen will test our preconceptions as she discusses perennials that can survive drought, excess rain, children's errant feet, the dog, and the rogue lawnmower--and some that can't. Beautiful and well-adapted plants for most New England zones and climates are the subjects of this vivid talk.

This lecture is co-sponsored with the Massachusetts Horticultural Society, New England Wildflower Society, and Wellesley College Friends of Horticulture.

Admission: \$18

Wellesley Community Center, 219 Washington Street, Wellesley Hills MA
617-524-1718, Fax: 617-524-1418, arbweb@arnarb.harvard.edu
<http://www.arboretum.harvard.edu>



Spring Flower Show at South Shore Natural Science Center Saturday, March 06, 2004 - Sunday, March 07, 2004

10:00am to 5:00pm, both days

Take a break from the cold and snow outside as you wander among the flowers at the seventh annual Spring Flower Show Weekend at the South Shore Natural Science Center in Norwell, MA, where several of the area's most talented landscape architects, area garden centers and floral designers transform the Science Center into a springtime fantasy.

On Saturday and Sunday, March 6-7, 2004, stroll through the Flower Show, register for one of several horticultural workshops offered, including a Question-and-Answer Session with The Patriot Ledger's Bill Cannon, and shop for plants, seeds and gardening-related items.

Admission to the Flower Show is \$6 (\$5 members). Horticultural workshops and lectures are additional.

For directions, call (781) 659-2559 or visit us on the web at www.ssns.org.



Garden Gimmicks

Forcing Branches

The bare branches you may see in your garden don't look like much now, but in a few weeks, they could be blooming beauties. With a technique called "forcing," we can actually trick the branches into believing it's spring, even though the calendar says it's not time.

Lilacs and plum are beautiful to force, but can be tricky. The best time to take your cuttings is between February and March during the warmest part of the day, when temperatures are above 32 degrees.

Once you get your cuttings indoors, get your pocketknife and remove 1" from the base. The reason to do this is that it is going to help the branch absorb more water. But just to ensure the uptake of water, get out a hammer and smash the ends of the stems.

Once you've prepared the stems, put them in luke-warm water, add a splash of hydrogen peroxide, and change the water every 2 days. This will help keep bacteria away. For the first few days, the stems need moisture, so cover them with plastic dry cleaning bag and keep them covered for 3 days. Keep in a cool location, and when the buds swell, move them into indirect light... and you'll have beautiful blooms in no time.

Courtesy Rebeccagarden.com

Environmental Reminder

Every year over 300 million printer toner cartridges are thrown away. These cartridges are hazardous pollutants going into landfills. The Easton Garden Club will collect and send in your toner cartridges for recycling. Simply bring them to a meeting and give them to **Amy Morse**, who is the coordinator of the collection. The club will receive \$1 for every one turned in to be recycled, and we won't be sending dangerous chemicals into the trash!