



Country Clippings

Easton Garden Club Newsletter

April 2005

The Easton Garden Club is a member of
The National Council of State Garden Clubs, Inc., and
The Garden Club Federation of Massachusetts, Inc., South Shore District

Editor: Nancy Cohenno
e-mail: nancyc314@aol.com

**M
E
E
T
I
N
G**

April 13 (Wednesday) 7:30 p.m. Oakes Ames Memorial Hall

“Pot d’Fleurs”.....Robin Kallfelz, Denise Batchis

A workshop filling baskets or pots with fresh flowering plants, branches and spring blossoms to create a “living arrangement”

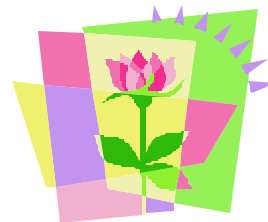
Exhibits: “Spring Break to Mexico”

Horticulture: “Lilacs, Azalea, Rhody”

Topic: “Composting – Gardeners Gold”

Refreshments: Pat Jacobsen, Chair
Ruth Bornstein, Pat Conley, Agnes Gaudet
Ellie Strug, Robin Kallfelz

Table Arrangement: Sandy Medeiros



Dates to Remember

April 6, 2005 (Wednesday) EGC is 75 years old

Happy Birthday to us!

April 12, 2005 (Tuesday)

South Shore District Luncheon at the Shaw Center, Brockton

April 16, 2005 (Saturday) 9:30 am

Clean out window boxes. Meet on Main Street

April 27, 2005 (Wednesday) 7:00 pm

Board meeting at the home of Leslie Mullen

May 1 - 3, 2005

Art in Bloom, Museum of Fine Arts, Boston

May 7, 2005 (Saturday) 9:00 am – 11:00 am

EGC Plant Sale, Sheep Pasture



EGC News

Springtime "Pots des Fleurs": We will design and create "pots des fleurs" at April's meeting. This will be a workshop (for members only) where we will plant pots or baskets with flowering spring blossoms, ivies, grasses, and branches to create unique spring "living arrangements." New England Pottery has generously donated colorful pots for this workshop, however, members may also bring their own containers or baskets to plant (12 inch diameter maximum, please). Some baskets may also be available at the workshop. There will be a charge to members of \$5.00 to make a pot or basket. Plants, soil, and moss will be provided. Please bring a trash bag or liner if you are using a basket. You may also want to bring garden gloves and accessories for your container.

Pots, baskets and plant material will be distributed on a "first come/first served" basis – so come early for best selection. **You must sign up for this workshop by contacting Denise Batchis by Tuesday, April 12th.**

Welcome New Members: We welcome the following new members Joanne Delaney, Carolyn Lynch, Betsy Regan, and Carla Thomas.

Window Boxes: We will be cleaning out the window boxes on **Saturday, April 16th at 9:30 am.** We will meet on Main Street. Bring a trash bag, clippers and gloves. Any questions, call Suzanne Zaff.

"Art in Bloom": The Museum of Fine Arts program "Art in Bloom" will take place on May 1 - 3. This year Darya Cotter and Amy Morse will be interpreting a piece titled "Lion from Processional Way". This is a clay relief from ancient Babylon made from bricks showing a striding lion.

Plant Sale: We will hold our annual Plant Sale on **Saturday, May 7, 2005 (RAIN OR SHINE)** from 9 – 11 in the Ames Field on Main Street (across from NRT). We ask that our members dig material from their gardens for us to sell at the sale. We need anything. You can dig your plants as soon as they are coming up and the ground is not too soggy. Call Amy Morse with any questions concerning the plants. There will be a sign up sheet for working the sale at the April meeting. We will also have "*white elephant*" table for your cast away stuff (no baskets unless they are really different). Call Kim Bertram with any questions about the white elephant.

Cook Book: If you would like your name to appear as a sponsor or Patron of the cookbook, please send a fifty-dollar donation to Kay Fulcher with a note saying how you'd like your name to appear in the book or call Amy Morse for a form. This must be done by April 15th.

Dues are Due: Membership Chairperson Kim Bertram is collecting dues and would like to remind everyone that all **dues are due by May 30th** for your name to be included in the EGC book. Please fill out the attached form and see Kim at the next meeting, or forward a check to her by mail with the completed form. Also, active members should check off what club activities they would like to help with. (Remember, everybody gets a turn at refreshments).

New England Pottery Sale: Mark your calendars for **Saturday, April 30th**, 8 am till 3pm. New England Pottery, 1000 Washington Street, Foxboro (Route 1) will be holding their annual sale. If you need some decent pots at bargain prices, do not miss this event. They are only open to the public two times a year.

EASTON GARDEN CLUB

2005 – 2006 DUES NOTICE

Active Members are required to attend at least three meetings a year and serve on at least two committees. Dues for this category are \$25.00 per year. They are entitled to vote and hold office.

Associate Member is a member in good standing that has actively contributed at least a minimum of five years to the club. This category shall have privileges except the right to vote or hold office and shall not be expected to participate on committees and special projects. Their dues are \$30.00 per year.

Patron Member's dues are \$35.00 per year. They are members that do not have to attend monthly meetings or participate in any activity. They have privileges except the right to vote or hold office and shall not be expected to participate on committees and special projects.

Honorary Member is a member who has attained the age of 65, and has contributed actively for at least 10 years. An Honorary member shall be responsible for notifying the current membership chairman of his/her age and status in order to be exempt from payment of dues and shall have voting privilege.

Select membership category:

Active	\$25.00
Associate	\$30.00
Patron	\$35.00
Honorary (Senior)	\$0.00

In which of the following are you most interested in serving:

- Helping the program chair before or after the meeting. Approximate time involved is one hour
- NRT
- Plant sale
- Greens sale when held
- Serving on the refreshment committee at a meeting (specify month if desired) _____
- Helping the refreshment committee set up or break down at a meeting
- Helping with publicity (disbursing posters, flyers, etc.)
- Helping with village improvement when necessary
- Refreshment table arrangements (specify month desired) _____
- Special projects such as garden tour, house tour

Name _____

Specify Exact Wording for Program Book

Address _____

Town _____ Zip _____

Phone _____

Email _____

PLEASE RETURN THIS FORM BY MAY 30, 2005 TO MEMBERSHIP CHAIRPERSON. If not received, your name will not appear in Program Book.